



# CORPORATE BROCHURE

## Zhongshan First Mold Manufacturing Limited ( China )

Address: No 88 West Shagang Road, GangKou Town, Zhongshan City, Guang Dong, China

## First Mold S.A. de C.V. ( Mexico )

Address: Nave ISK-14, Avenida Mineral de Cinco Señores No.100, del Parque Industrial Santa Fe, Silao de la Victoria, Guanajuato, C.P. 36275, México

Email: [sales@firstmold.com](mailto:sales@firstmold.com)  
Website: [www.firstmold.com](http://www.firstmold.com)



# Contents

## Company Profile

- 1 Development History
- 3 About Us

## Production

- 7 Workshop
- 11 Production Process
- 13 Quality Assurance

## Products

- 17 Product Showcase

## Market

- 25 Sales Network
- 25 Cooperative Partners

## Culture

- 27 Work Environment
- 28 Our Team

## Equipment

- 29 Equipment List

Our History

For Over Ten Years



**Vision** | Aim for "Talents Cradle" for manufacturing industry.

**Mission** | Cultivate excellent staffs for ourselves, and for the manufacturing industry.

**Values** | Excellent employees are the most we cherish. An outstanding enterprise is the warmest "residence" for employees. Enterprise and employees stick together to make a better progress and achievement.

立业安邦 元梦扶家  
 立志存千里 元梦逐九洲



### Original Aspiration

I have to say I am very proud of my role in our business because people trust me not just for my capability of dealing with all sorts of people and projects, also for my personality.

I really treasure the people we have by my heart, I really want them to learn, share and work happily together. I want to build a team with trust model! We have not seen a good model for that in China yet, but I believe it is completely possible if we pick out good guys and carry out our trust and friendship by heart every single day.

This is very important to a business and very helpful to the nation regarding human relationships.

*James Li*  
 (First Mold CEO)



- China** 2 plants: First Part Manufacturing (Rapid Prototyping) and First Mold Manufacturing (Injection Tooling & Parts Molding)
- Hong Kong** First Part China Limited: the center of marketing and sales
- France** IMALIZE is a European branch of First Part, with both manufacturing and marketing functions
- Singapore** Marketing center in Southeast Asia: First Part Pte. Ltd. and First Mold Pte. Ltd.
- Mexico** First Mold Mexico factory : start operation in 2024.12

**Zhongshan First Mold Manufacturing Limited** ◀◀

First Mold Manufacturing Limited is a high-tech enterprise with integrated business, including R&D, design service, manufacturing and sales. We mainly engage in the manufacturing of high precision tooling, injection molding, die casting, metals & plastics prototyping and custom-made parts. We have explored our business to various industries, including automotive, aerospace, medical equipment, consumer electronics and other fields. With worldwide sales network, including United States, Canada, France, UK, Australia, Singapore, Malaysia and many other countries and regions.



Our company pursues ultimate precision manufacturing standard, and explores the art of forming excellent metal and plastic parts by intensive manufacturing process, from careful material selection, precision machining, and precise quality insurance to standardized packaging. Our company has been maintaining comprehensive, in-depth and long team cooperation relationship with many international well-known enterprises, such as Tesla, Honda, Zodiac Aerospace, B/E Aerospace, Avanos Medical, Steris, Acuity Brands, Emerson, Varroc Lighting Systems, TTI Group and others.

Bearing in mind of Value “Building First Mold Landscape from Long-term Visions, Gathering Talents without Restricted Patterns”, we strive to create a favorable employment environment that can attract, unite, motivate, train and cultivate people. We devote to strengthening team building and talent development. Carrying the basic Concept “Set Rules. Cultivate Virtues. Establish Benchmarks”, we commit to build standardized managements internally and estimate industry benchmarks externally, which follows Virtues all through. We work together to create a platform and a place for people to fully show their talents, and continuously consolidate our company's foundation, to promote mutual development and wins between the company and employees.

- 30,000+ m<sup>2</sup> of modern garden plant
- 10+ fortune 500 partners
- 30+ served countries and regions
- 500+ monthly delivered projects
- 100+ high-end technical personnel
- 80+ professional imported equipments

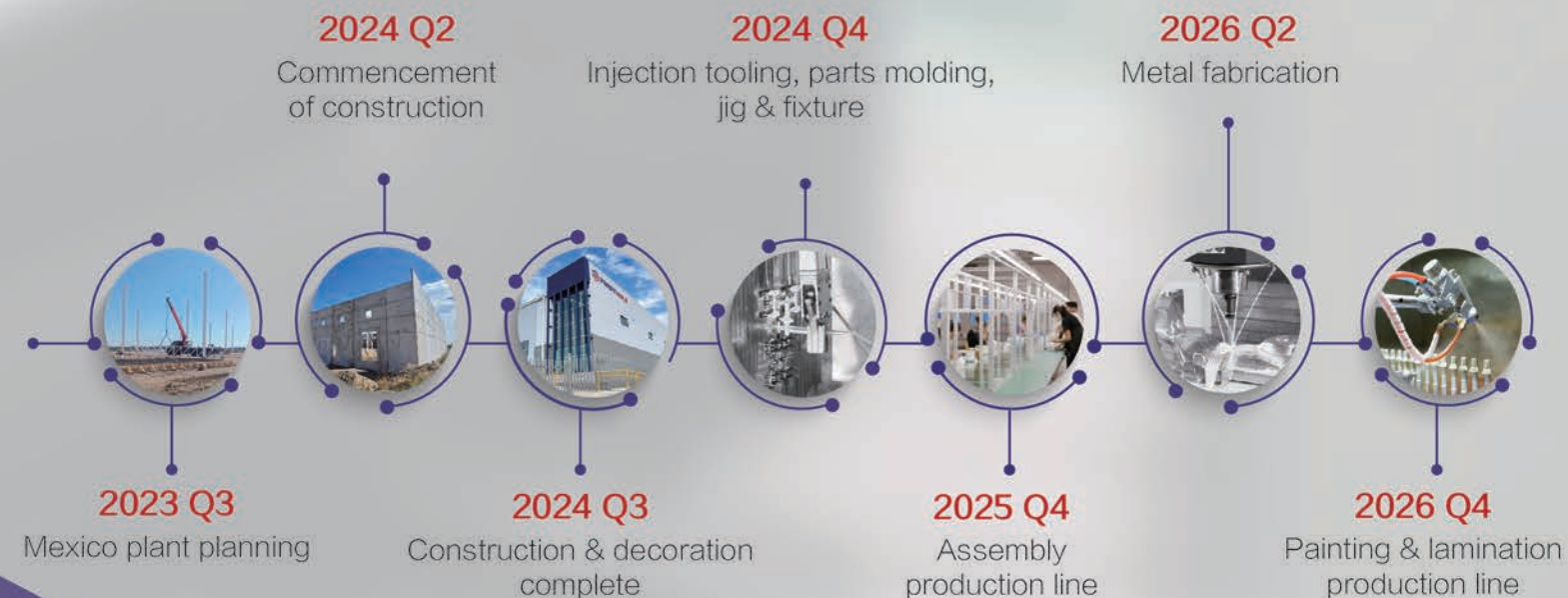
**First Mold S.A. de C.V.** ◀◀

Our Mexico facility is a hub for high-quality mold manufacturing, particularly in rapid tooling and injection molding, leveraging advanced technology inspired by top manufacturing practices from China. We specialize in rapid prototype molds, high-volume production molds, and complex two-shot (double-injection) molds, fully equipped to handle a variety of manufacturing needs.



Our primary client extends beyond—spanning the U.S., Canada, and Europe. With our strong logistics network, we deliver end-to-end solutions across North America and Europe, ensuring quality and timely delivery to meet diverse market demands.

**Mexico Plant Time Line** ◀◀



### CNC Machining



### Mold Making



### Injection Molding



### Warehouse And Logistics





**Tooling & Molding**



**01**



Mold Designing



**02**



Mold Manufacturing



**03**



Mold Assembling



**04**



Injection Molding



**Prototype, Jig & Fixture Manufacturing**



**01**



CNC Programing



**02**



CNC Machining



**03**



Prototype Assembling



**04**



Jigs & Fixture



## Quality Policy : "Guarantee Quality, Increase Efficiency, Emphasize Service and Encourage Innovation"

Lean manufacturing quality is the foothold for enterprise development. High-quality products are powerful weapons that set us high in the international market. First Mold seeks excellent inspection processes from material selection, designing, manufacturing, hand finishing to quality inspection. We strictly supervise every process to effectively guarantee products quality.

### QC Department



### Inspection Equipment



## FIRST MOLD QUALITY MANAGEMENT SYSTEM

Our company upholds the highest standards of quality and operational excellence, supported by key international certifications:

**ISO 9001:** We maintain a strong quality management system, focusing on customer satisfaction, continuous improvement, and consistent product quality.

**IATF 16949:** As part of the automotive industry, our IATF 16949 certification ensures that we meet the stringent requirements for quality, focusing on defect prevention, process control, and waste reduction.

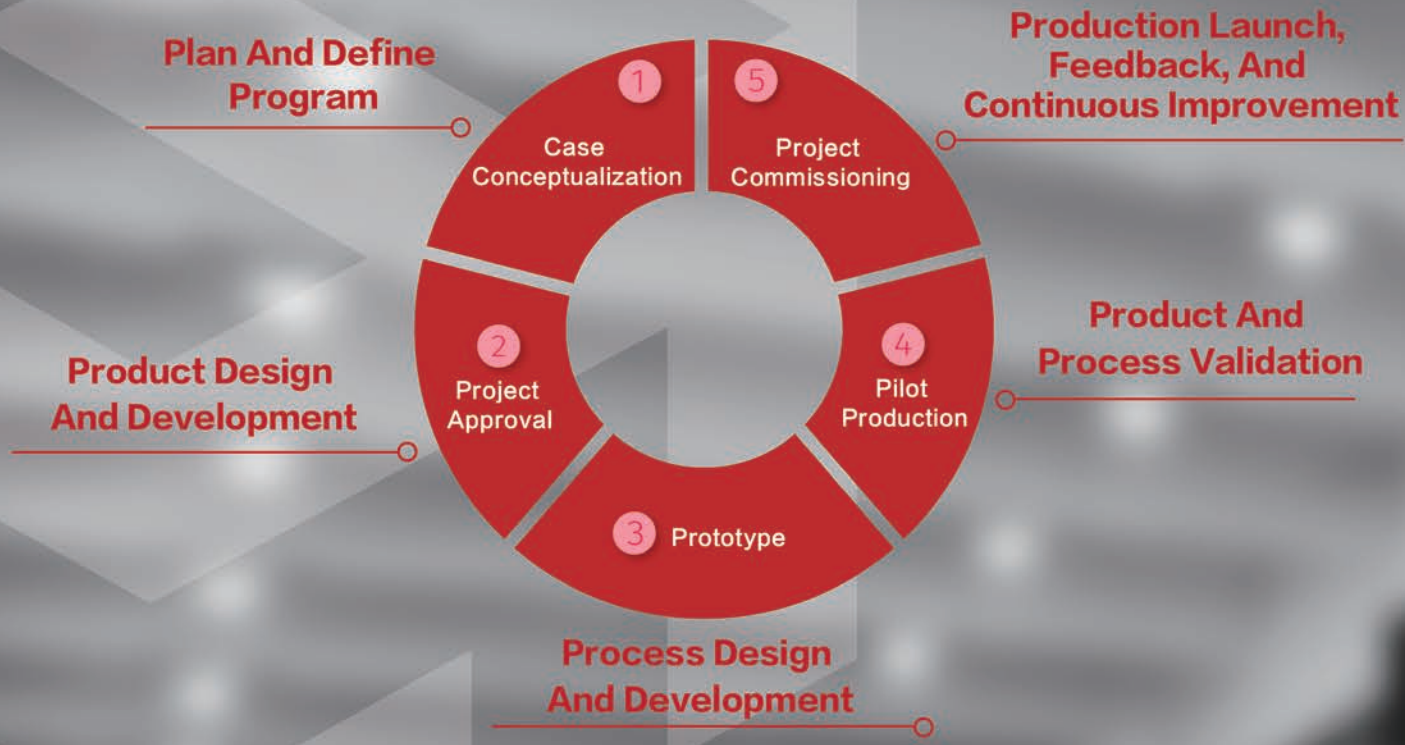
**ISO 13485:** Our adherence to ISO 13485 reflects our commitment to the medical device industry, ensuring the highest standards of product quality and patient safety.

**ISO 14001:** With this environmental management certification, we demonstrate our commitment to sustainable practices, minimizing environmental impact, and ensuring compliance with environmental laws.

**ISO 45001:** We prioritize employee safety and health through an effective occupational health and safety management system, reducing risks and ensuring a safe working environment.



## Project Development Process: APQP Five Stages



## First Mold Five Steps Of Quality Inspection



Plan And Define Program

**OBJECTIVE :**  
Set up the project, define goals, and gather resources.

**KEY TASKS :**  
– Understand customer requirements.  
– Plan the timeline and milestones.  
– Identify risks and create mitigation plans.

Product Design And Development

**OBJECTIVE :**  
Design the product to meet customer needs and quality standards.

**KEY TASKS :**  
– Create product design and prototypes.  
– Conduct design reviews and FMEA (Failure Mode and Effects Analysis).  
– Validate the design with testing.

Process Design And Development

**OBJECTIVE :**  
Develop the manufacturing process to ensure quality and consistency.

**KEY TASKS :**  
– Design production processes.  
– Conduct process FMEA.  
– Set process controls and perform capability studies.

Product And Process Validation

**OBJECTIVE :**  
Confirm that both product and process meet requirements.

**KEY TASKS :**  
– Run pilot or pre-production tests.  
– Test the product's performance.  
– Implement corrective actions if necessary.

Production Launch, Feedback, And Continuous Improvement

**OBJECTIVE :**  
Start full production and improve continuously.

**KEY TASKS :**  
– Launch full-scale production.  
– Collect feedback from customers and production.  
– Make improvements based on feedback.

Incoming Quality Control (IQC)

Strictly Gauge Incoming Materials



Tooling Process Quality Control

Professional High Precision Mold Manufacturing Process



Production In Process Quality Control (IPQC)

Comprehensive Control To Guarantee Products Quality



Outgoing Quality Control

Continuously Improve Quality Service To Meet The Customer's Requirements



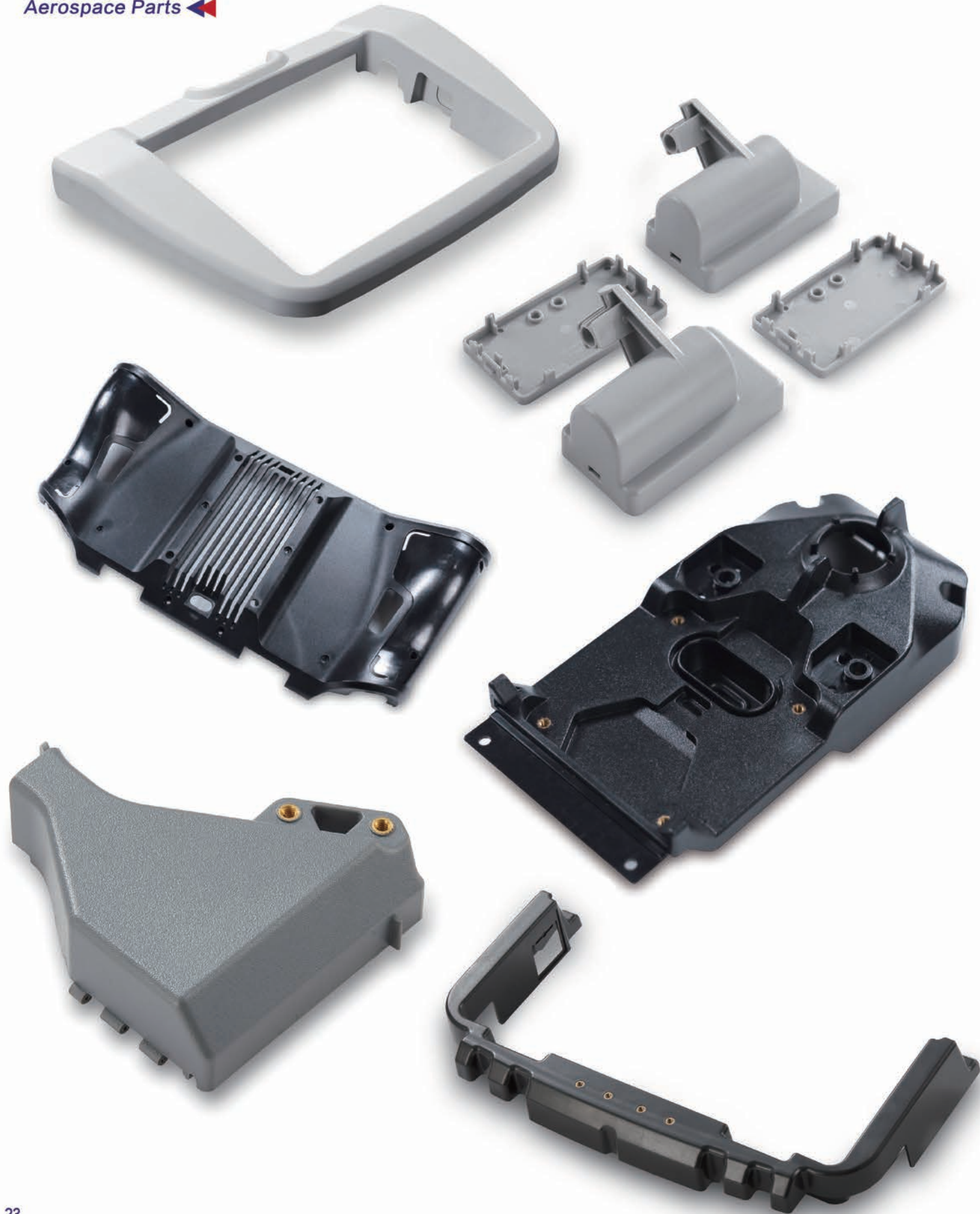
Automotive Handle

Other Automotive Parts









# Sales Network

## First Mold explores business over 30 countries and regions around the world

Our company owns a powerful storage capacity, cooperates with worldwide logistics companies and offers global excellent after-sales service. We are deeply favored and trusted by our customers. We have established international sales networks throughout the United States, Canada, Britain, France and many other countries and districts. We also have built long-term business relationships with multiple international renowned companies, even developing broad markets together.

First Mold takes the spirit of a professional, dedicated and devoted craftsman. We are committed to providing global customers with precision tooling production solutions for multiple industries. We offer customized services for both rapid prototyping and production parts for all kinds of key industries. Our biggest harvest is the accumulation of reputation and recognition from customers all around the world, covering industries of automotive, aerospace, medical devices, consumer electronics and many other fields.

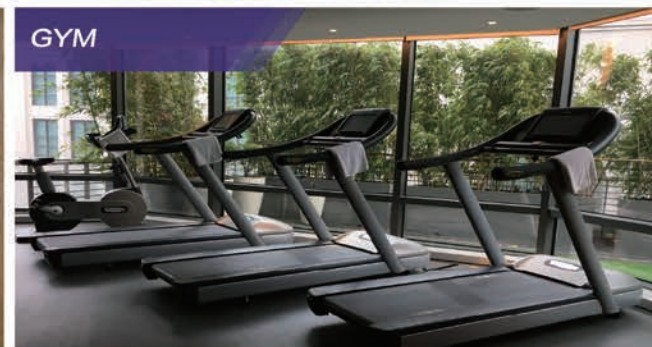


OUR SERVICES COVER 30+ COUNTRIES AND REGIONS AROUND THE WORLD



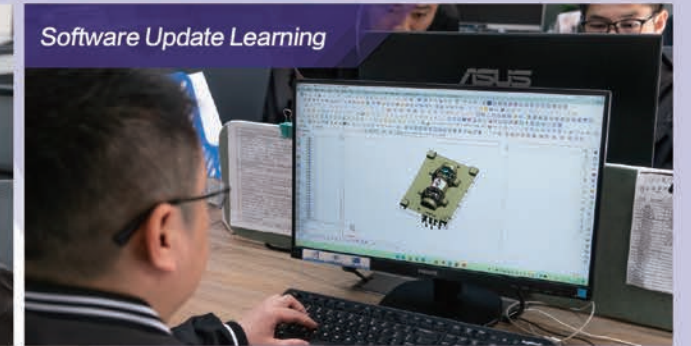
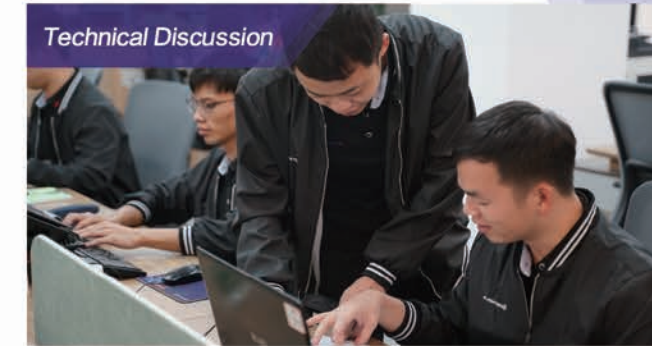
## Work Environment

Our company owns a large-scale garden-style industrial park, with an occupation area of over 30,000 square meters in China plant and 10,000 square meters in our Mexico plant. We enjoy comfortable and spacious modern offices, leisure and entertainment area.



## Our Team

Our company holds monthly activities such as basketball games, pool games, hiking, etc., building friendship between colleagues, enhancing teamwork and trust.



### Key Equipment List

NAME	BRAND & MODEL	SPEC	ORIGIN	QTY
Precision Engineering Shop				
CNC MILL	HAAS UMC-750(5AXIS)	760x508x508 mm	US	2
CNC MILL	HAAS VF-4SS	1270x508x635 mm	US	4
CNC MILL	HAAS VF-2SS	762x406x508 mm	US	8
CNC MILL	AKIRA-SEIKI V5XP	1300x540x560 mm	US	2
CNC MILL	AKIRA-SEIKI V2.5XP	760x435x520 mm	US	4
CNC MILL	FEELER VMP-23A	580x420x510 mm	TW	6
CNC MILL	BAOFENG BF-858V	800x500x800 mm	CN	2

### Tooling Shop

CNC MILL	MIKRON HSM 500	500x450x350mm	CH	1
CNC MILL	CTM V10L(15000rpm)	1000x700x600 mm	TW	2
CNC MILL	BAOFENG BF-1613V	1600x1300x600 mm	CN	1
CNC MILL	BAOFENG BF-1370VP	1300x700x700 mm	CN	1
CNC MILL	BAOFENG BF-T600	600x500x300 mm	CN	2
CNC MILL	TAIDA TD-V850	800x500x500mm	TW	1
CNC MILL	TAIDA TD-1270	1200x700x700 mm	TW	2
OPTIC EDM	MAKINO EDGE3i	450x300x300 mm	JP	1
OPTIC EDM	Mirrordick CNC AD-45	450x300x300 mm	CN	1
DOUBLE HEAD EDM	Mirrordick AM 120R	1400x500x400 mm	CN	2
MANUAL MILL	JOINT	900x350x340 mm	TW	5
GRINDING	KENT KGS-250M	500x200 mm	CN	5
PRECISION GRINDING	KENT KGS-84AHK	920x450 mm	TW	1
DIE SPOTTING PRESS	AQUAmate LS-120	120T	CN	1

### QC Room

### PRECISION

CMM	SEREIN CROMA1086	(2.8+L/300) μm	SE	2
CMM	SEREIN CROMA686	(2.8+L/300) μm	SE	1
PROJECTOR	HEXAGON EAGLE S432	(3.0+L/200) μm	SE	2
PROJECTOR (AUTO)	HEXAGON VIEWMAX C432	(3.0+L/200) μm	SE	1
HIGH GAUGE	TESA HITE700	(2.8+L/300) μm	CH	3
HIGH GAUGE	MITUTOYO QM-HEIGHT 600	(2.8+L/300) μm	JP	1
MATERIAL TESTOR	DPO-2000	1PPM	US	1
ROUGHNESS INSPECTOR	MITUTOYO SJ-210	±7 μm	JP	1
FLUORESCENT LIGHT TESTOR	EDX1800B	±0.05%	CN	1

### Assembly Line

### Length

Assembly Line	25m	1
---------------	-----	---

### Key Equipment List

NAME	BRAND & MODEL	SPEC	ORIGIN	QTY
Injection Molding Shop				
INJECTION PRESS	HAITIAN MA2000III	200T	CN	2
INJECTION PRESS	HAITIAN MA1200III	120T	CN	2
INJECTION PRESS	HAITIAN MA10000	1000T	CN	1
INJECTION PRESS	HAITIAN MA3000	300T	CN	1
INJECTION PRESS	HAITIAN MA2500	250T	CN	2
INJECTION PRESS	HAITIAN MA1600	160T	CN	2
INJECTION PRESS	HAITIAN MA900III	90T	CN	2
INJECTION PRESS	HAITIAN (Double-Shot) MA2500/280-160	250T	CN	1
INJECTION PRESS	FCS (Double-Shot)FB-280R	280T	TW	1
INJECTION PRESS	CHENHSONG JM668-MK6	668T	CN	1
INJECTION PRESS	CHENHSONG JM408-MK6	408T	CN	1
INJECTION PRESS	CHENHSONG JM398-MK6	398T	CN	1
INJECTION PRESS	CHENHSONG JM178-MK6	178T	CN	3
INJECTION PRESS	CHENHSONG JM138-MK6	138T	CN	1
INJECTION PRESS	CHENHSONG JM98-MK6	98T	CN	1
INJECTION PRESS	MULTIPLAS V3-2R-55T	55T	CN	1
ELECTRIC INJECTION PRESS	JSW J180ADS-180U	180T	JP	1
ELECTRIC INJECTION PRESS	JSW J130ADS-110U	130T	JP	1

### Die Casting Shop

DIE CAST PRESS	L.K. DCC280	280T	CN	1
DIE CAST PRESS	L.K. DCC120	120T	CN	1



Key Equipment List

NAME	BRAND & MODEL	SPEC	ORIGIN	QTY
Tooling Shop				
CNC MILL	HAAS VM-2	762x508x508 mm	US	1
CNC MILL	HAAS VM-3	1016x660x635 mm	US	1
OPTIC EDM	Mirrordick CNC AD-45	900x600x300mm	CN	1
DOUBLE HEAD EDM	Mirrordick AM 120R	1700x900x500mm	CN	1
GUN DRILL	ACCURATE DH-1300	1300x1300x1000 mm	CN	1
WIRECUT	SSG HB400	580x460mm	CN	1
WIRECUT	SSG HB600	1250x700mm	CN	1
MANUAL MILL	JOINT	900x350x340 mm	TW	2
GRINDING	KENT KGS-250M	500x200 mm	CN	3
PRECISION GRINDING	KENT KGS-84AHK	920x450 mm	TW	1
DRILLING MACHINE	ZNC4535S	450x350x450mm	CN	1
LATHE MACHINE	JOINT	900x350x340 mm	TW	2
LATHE MACHINE	1200mm STROKE		CN	1
TAPPING MACHINE			CN	1
SAWING MACHINE			CN	1
ARGON WELDING MACHINE			CN	1
ELETRIC WATER PRESSURE TESTING MACHINE			CN	1
LASER MARKING MACHINE	60W		CN	1
LASER WELDING MACHINE	TFL-400 III -DB		CN	1

Injection Molding Shop				
INJECTION PRESS	HAITIAN MA4700III	470T	CN	1
INJECTION PRESS	HAITIAN MA3200III	320T	CN	1
INJECTION PRESS	HAITIAN MA2600III	260T	CN	1
INJECTION PRESS	HAITIAN MA1600III	160T	CN	1
INJECTION PRESS	HAITIAN MA1200III	120T	CN	1
INJECTION PRESS	HAITIAN MA900III	90T	CN	1

QC Room	Measuring Range	Scale	Model	Measuring Type	Qty
CMM	800x1000x600	0.001	CROMA-8106	DIMENSION, POSITION, PROFILE	1
PROJECTOR	400x300x200	0.001	Eagle-S 432	DIMENSION	1
HEIGHT GAUGE	0-700	0.001	HITE700	DIMENSION	1
SHORE HARDNESS TESTER	0-100	1	LX-A-1	PLASTIC HARDNESS	1
REBOUND HARDNESS TESTER			TH140	STEEL HARDNESS	1
STANDARD LIGHT SOURCE COLOR MATCHING BOX			P60 (6)	COLOR DIFFERENCE	1
PRECISION COLOR DIFFERENCE METER			WR-18	COLOR DIFFERENCE	1
RAPID MOISTURE ANALYZER	0.005-120g		SM-120	MOISTURE	1
X-RAY SPECTROMETER	COMPLIANT WITH EU 2.0 STANDARDS		EDX1800B	ROHS	1
DIGITAL THERMO-HYGROMETER	-50°C to +70°C / 10% RH to 99% RH	0.1°C	ZG-7020	TEMPERATURE	1



**FIRSTMOLD**  
FIRST YOUR NEED • MOLD YOUR PART

立志存千里 无梦逐九州